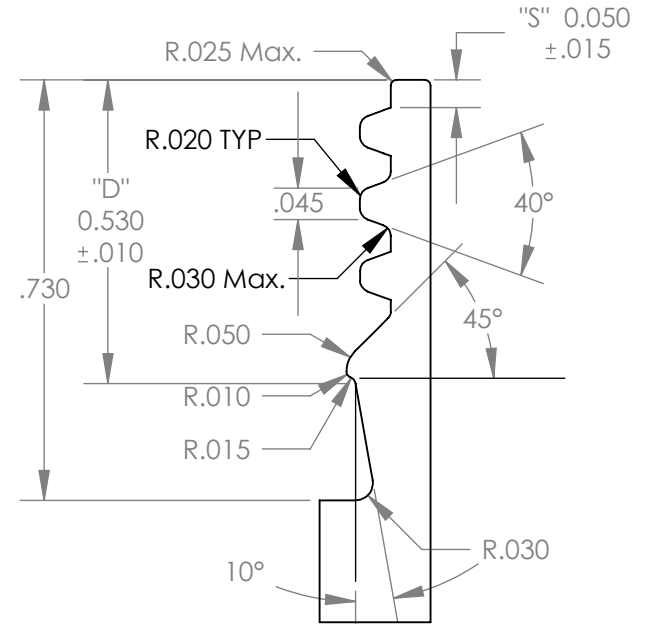
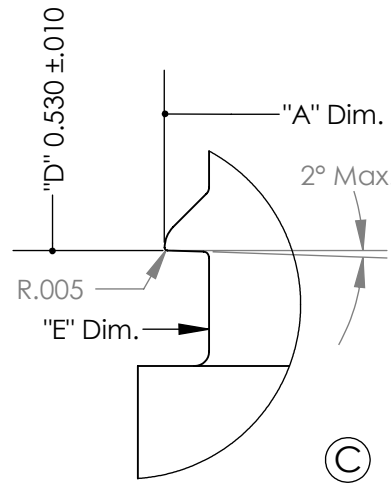
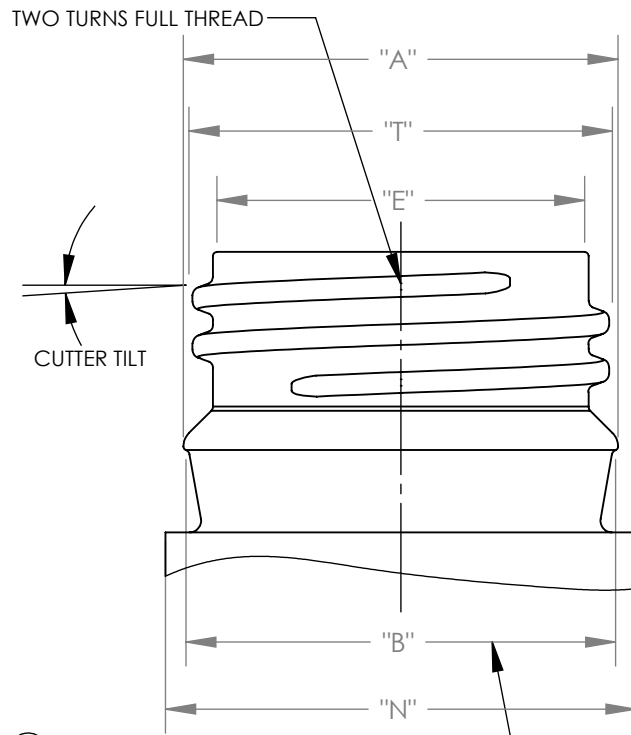


SIZE (MM)	"A"	"T"	"E"	"B"	"N"	TILT	TPI
20	0.825 ±.006	0.780 ±.006	0.691 ±.008	N/A	N/A	3.10°	8
28	1.132 ±.010	1.085 ±.010	0.978 ±.010	1.100 ±.010	1.225	2.22°	8
33	1.306 ±.012	1.252 ±.012	1.145 ±.012	1.260 ±.012	1.400	1.90°	8
38	1.520 ±.012	1.459 ±.012	1.363 ±.012	1.485 ±.012	1.615	1.60°	8
48	1.920 ±.012	1.860 ±.012	1.763 ±.012	1.875 ±.012	1.810	1.25°	8

REV.	DESCRIPTION	DATE	APPROVED
A	CHANGED NAME IN TITLE BLOCK FROM ALCOA TO HOFFER	9/9/98	SJL
B	48 MM FINISH ADDED (PRELIMINARY SPECIFICATION)	5/27/99	SJL
B1	REDRAWN IN CAD	5/2/08	WEI
C	ALTERNATE TAMPER BAND CONSTRUCTION ADDED	5/20/08	WEI
D	ADDED SPECIFICATION FOR 20MM	4/27/09	WEI
E	ADDED NOTE FOR BOTTLE ID AND CONCENTRICITY FOR 28MM LINERLESS APPLICATIONS.	11/20/13	WEI
G	REMOVED NOTE REGARDING PRELIMINARY SPECIFICATION	3/16/18	BMB



ALTERNATE TAMPER BAND CONSTRUCTION
(This construction is standard for 20mm and optional on all other cap sizes).

NOTES FOR 28MM LINERLESS APPLICATIONS:
-THE RECOMMENDED BOTTLE ID IS .860/.845".
-CONCENTRICITY BETWEEN THE 'E' DIAMETER AND THE BOTTLE ID SHOULD BE WITHIN .005"

PROPRIETARY AND CONFIDENTIAL
THE INFORMATION CONTAINED IN THIS DRAWING IS THE SOLE PROPERTY OF HOFFER PLASTICS CORP. ANY REPRODUCTION IN PART OR AS A WHOLE WITHOUT THE WRITTEN PERMISSION OF HOFFER PLASTICS CORP. IS PROHIBITED.

UNLESS OTHERWISE SPECIFIED:		NAME	DATE
DIMENSIONS ARE IN INCHES/MM		WEI	5/2/08
TOLERANCES:			
FRACTIONAL ±			
ANGULAR: ± 1°			
TWO PLACE DECIMAL ± .010			
THREE PLACE DECIMAL ± .005			
INTERPRET GEOMETRIC TOLERANCING PER:			
MATERIAL			
FINISH			
DO NOT SCALE DRAWING			
COMMENTS:			
THREAD CUTTER SIZE - .750 DIA. FILLETS NOT GIVEN - MAX. .030 R NECK I.D. AND O.D. IS OPTIONAL PROPER FUNCTION OF CLOSURES REQUIRES THAT THE 'A' & 'B' DIA. FOLLOW UNIFORMLY TO MAINTAIN THE .010 R & .015 R.			

Hoffer Plastics Corp.
500 N. Collins St.
So. Elgin, Il. 60177



TITLE:

DROP-LOK® FINISH FOR HDPE

SIZE	DWG. NO.	REV
A	1787	G

SCALE: 2:1 Shrink: SHEET 1 OF 1